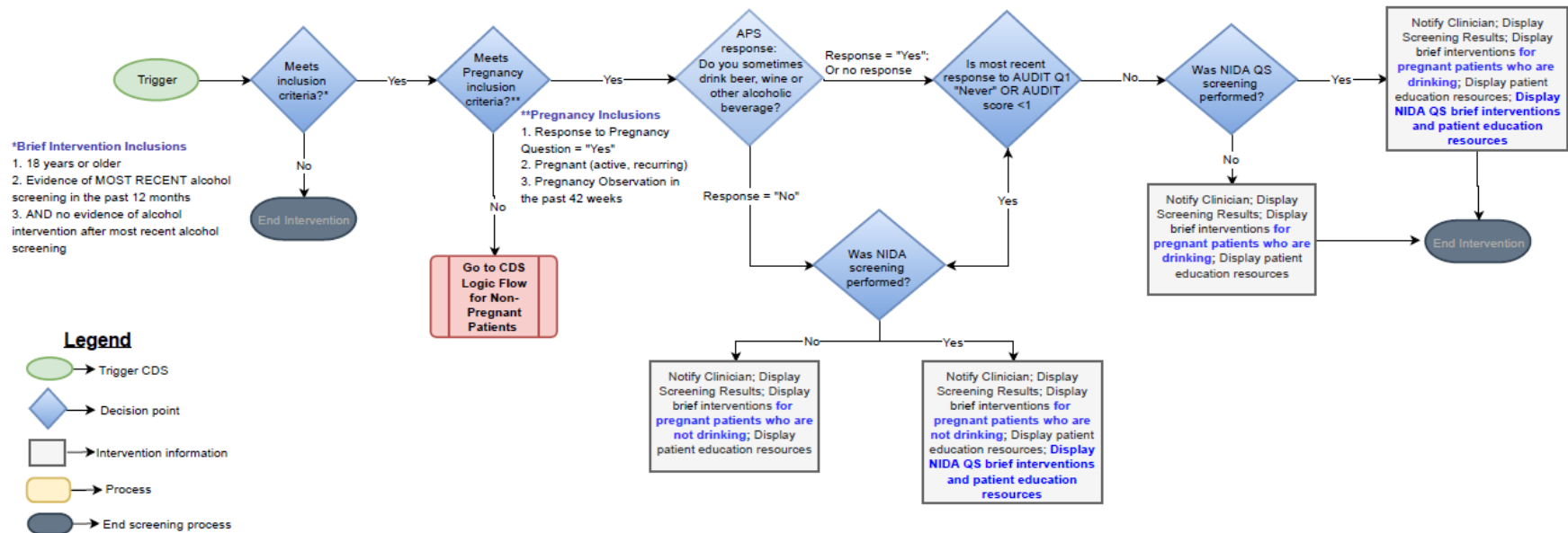


## Clinical Decision Support (CDS) Logic Flow:

### Brief Behavioral Counseling Interventions for Excessive Alcohol Consumption with Optional Referral to Treatment

The CDS logic flow diagram in **Figure 1** displays an overview of the CDS logic that applies to patients that are either currently pregnant (based on information found in their patient record in the EHR or health IT system) or responded “Yes” to the pregnancy question (i.e., “Are you currently pregnant or trying to become pregnant?”) in the associated Centers for Disease Control and Prevention (CDC) alcohol screening CDS artifacts. The CDS logic flow diagram in **Figure 2** displays an overview of the CDS logic that applies to all other patients who are not currently pregnant or did not respond “Yes” to the pregnancy question.



**Figure 1: Alcohol Brief Intervention and Referral CDS Logic Flow for Pregnant Patients**

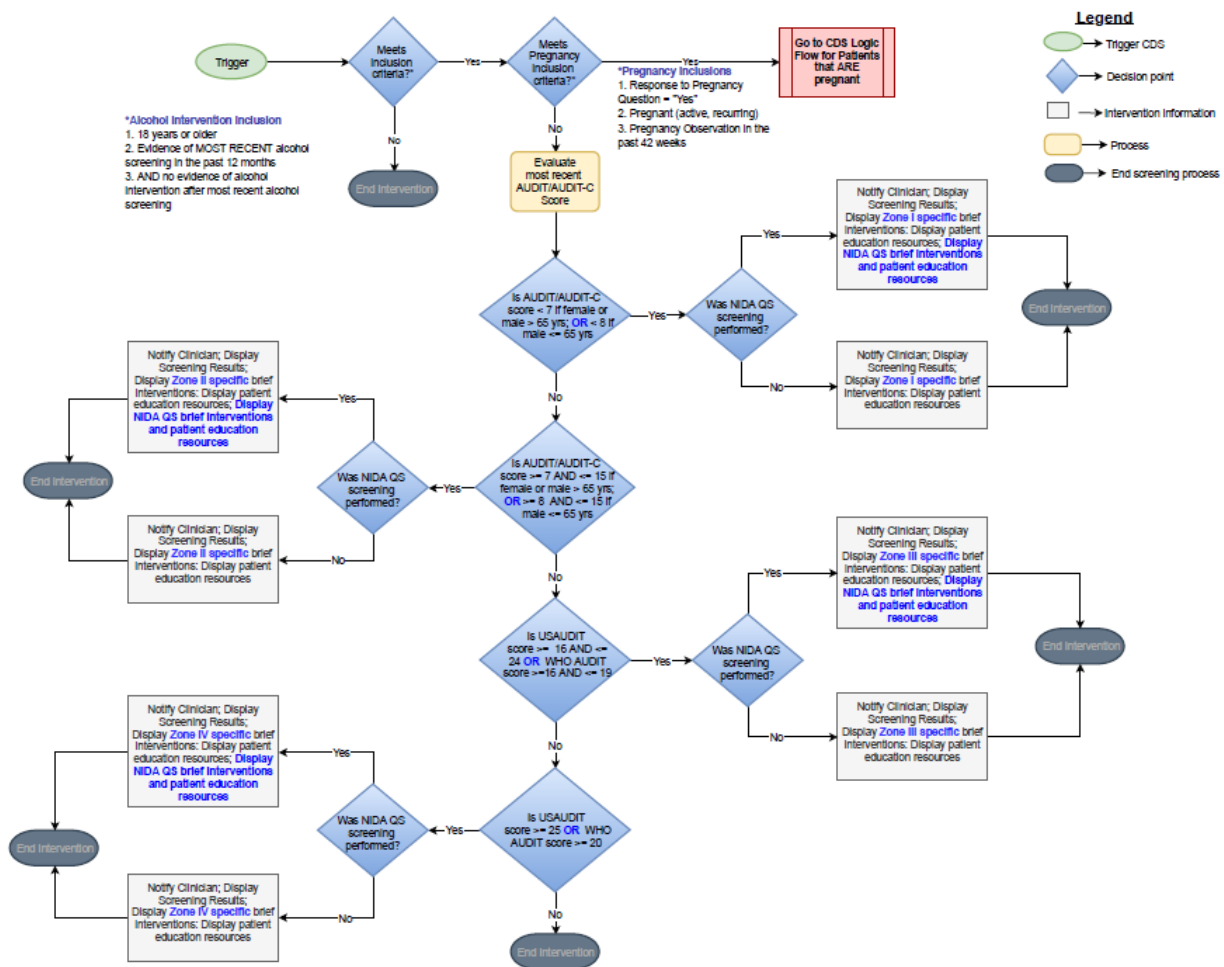


Figure 2: Alcohol Brief Intervention and Referral CDS Logic Flow for Patients Who Are Not Pregnant

Additional details regarding the CDS logic and specifications are available in the implementation guide attached to this artifact.